

AGM31

DATA SHEET



Case : Black
 Cover : Black
 Handle : Black

PERFORMANCE

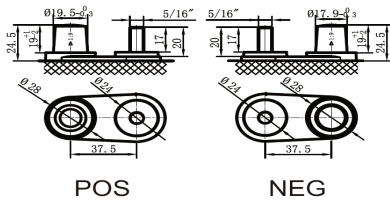
Nominal Voltage [V] :	12
Capacity [Ah] :	115
Reserve Capacity [min] :	200
Cold Cranking Amps (SAE) [A] :	1,000
MCA :	1,150

DIMENSIONS AND WEIGHT

Length [mm] (±2) :	330
Width [mm] (±2) :	173
Height [mm] (±2) :	212
Total Height [mm] (±2) :	237
Battery Weight [kg] (±0.5) :	31.7

Terminal

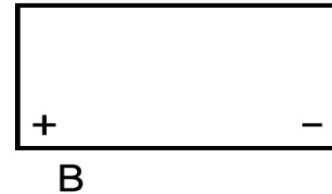
Terminal Layout



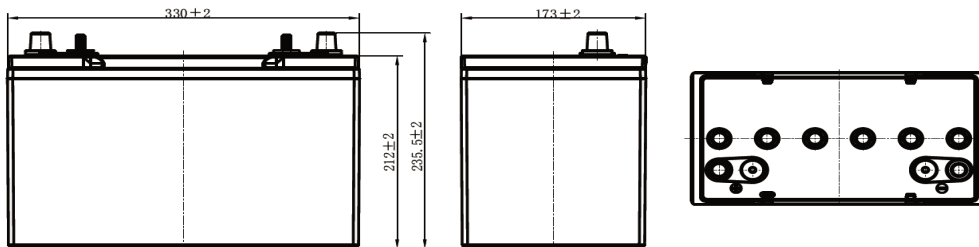
Terminal Type



Dual Posts



Dimensions (mm)

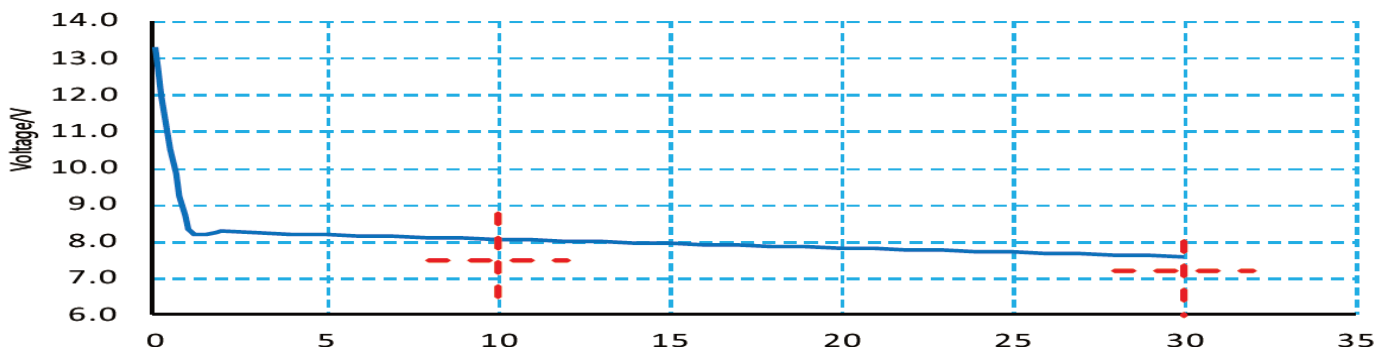


Discharge Characteristics (-18°C, 0°F)

AGM31

CCA-SAE(@-18°C)with I=825A

Spec $U_{10s} \geq 7.5V$ $U_{30s} \geq 7.2V$



* Values are subject to variation of +/- 5% in normal manufacturing processes. Technical specifications and the product line above could be changed without prior notice.

Hi-Tec Batteries Pty Ltd.

5 Tarlington Place, Smithfield NSW 2164.

www.hi-tecbatteries.com.au Phone: 1300 796 009